



**USAID**  
FROM THE AMERICAN PEOPLE

## Whole of Government Approach to Food Security:



USAID Perspectives on the USG Global  
Hunger and Food Security Initiative

- Support development of country-led plans in countries with the highest burden
- Support implementation at a country level
- Comprehensive approach that maximizes synergies between sectors for agriculture, health, and humanitarian assistance

***Highlighted approaches:***

- *Regional programs*
- *Research and technology deployment*
- *Monitoring and evaluation*
- *Public private partnerships*

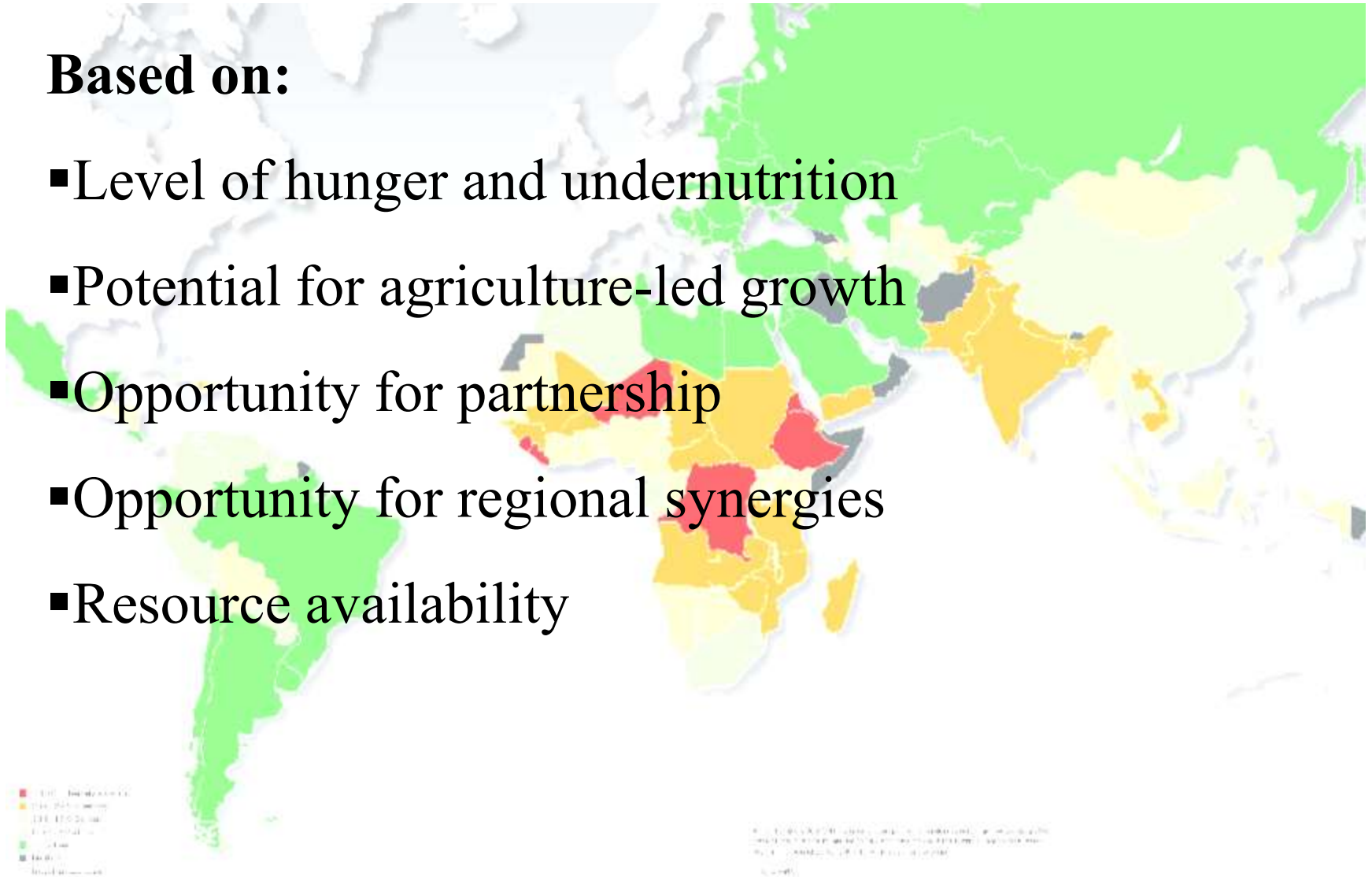
## L'Aquila Principles:

- Strategic coordination
- Invest in country-owned plans
- Comprehensive approach to food security
- Use of effective multilateral mechanisms and partnerships
- Sustained commitment of financial support and technical assistance



## Based on:

- Level of hunger and undernutrition
- Potential for agriculture-led growth
- Opportunity for partnership
- Opportunity for regional synergies
- Resource availability



<b>Phase I description</b>	<b>Illustrative examples of Phase I investment</b>
Plan development	<ul style="list-style-type: none"> <li>-Data systems that help target investments and monitor progress</li> <li>-Public expenditure review and analysis</li> <li>-Natural resources and environmental assessments that underpin a sustainable strategy</li> </ul>
Policy reform	<ul style="list-style-type: none"> <li>-Programs to increase women’s control over land and other assets</li> <li>-Support for policy reforms, such as modern seed laws, greater transparency, reduced tariff barriers etc.</li> </ul>
Capacity building	<ul style="list-style-type: none"> <li>-Skills training of key government officials working on food security</li> <li>-Expansion of agricultural extension and university systems</li> </ul>

### Country-owned programs:

- Improving agriculture sector growth
- Improving nutrition
- Inclusive rural income growth



## ■ **Programs:**

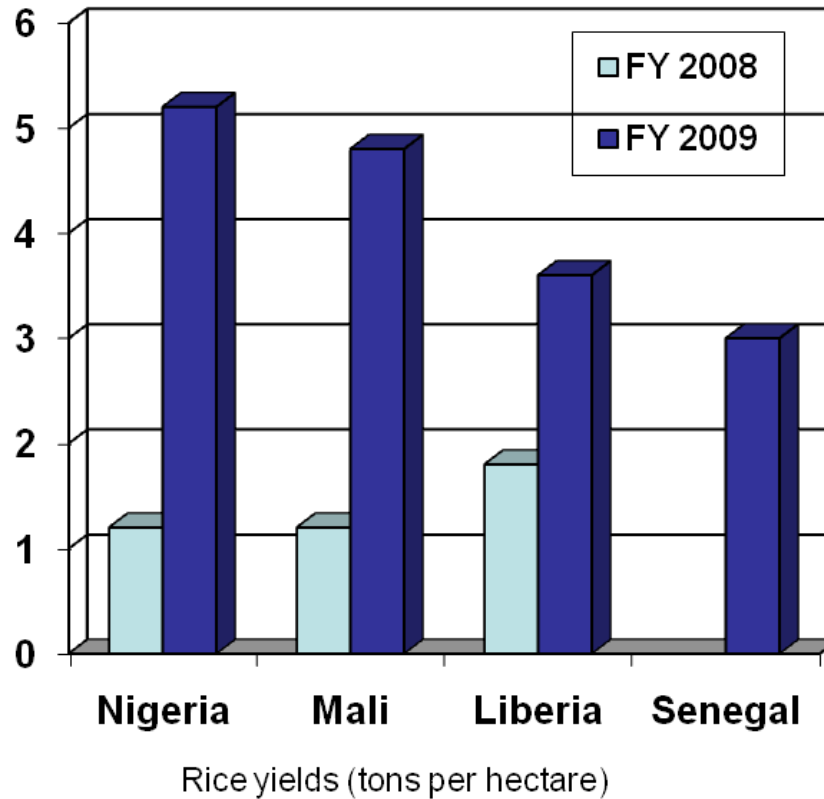
- Agricultural productivity (access to inputs and financial services, irrigation, agricultural extension, property rights to land and other productive assets)
- Markets and trade (market information, rural feeder roads, post-harvest infrastructure, policy environment)
- Regional integration

■ **Impact:** agriculture sector growth, productivity, adoption of targeted technologies, value of private investment

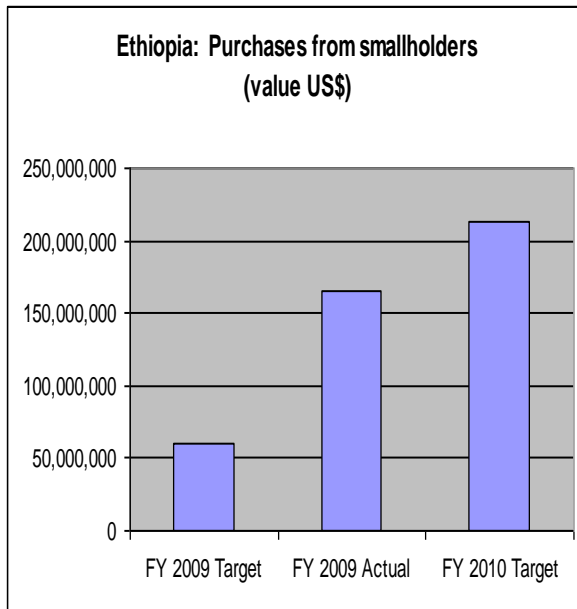


# Progress: Agriculture production and productivity

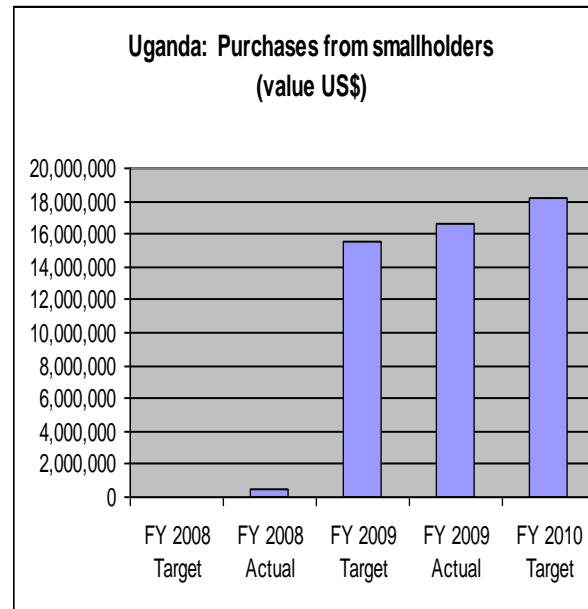
## 2009 Rice yields among USAID assisted farmers in West Africa



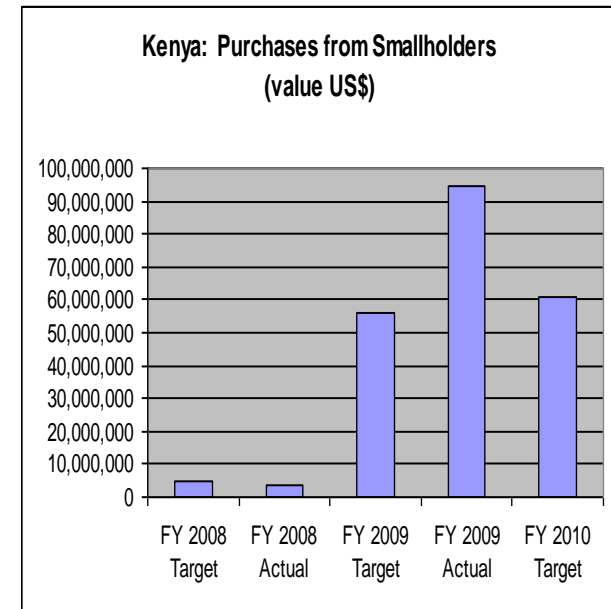
## East Africa: Markets opened for smallholders



Increasing the competitiveness of Ethiopian smallholder livestock and meat through improved marketing and SPS systems has increased exports to international markets, especially the Middle East.



Ugandan smallholders are able to access regional markets for staple food production – local food aid purchases are stimulating additional supply.



In spite of conflict in 2008, Kenyan smallholders sold more maize and milk in FY2009. Drought and uncertainty moderate targets for FY 2010.

- **Programs:** Expand evidence-based interventions with a focus on prevention, including: community-based programs in the -9 to 24 month window of opportunity; diet quality and diversification; targeted micronutrient supplementation; food fortification; and community management of acute malnutrition
- **2010 Focus:** Country nutrition strategies, capacities, integration of sectors
- **Impact:** Reductions in prevalence of child underweight, stunting, wasting



**USAID**  
FROM THE AMERICAN PEOPLE

# Nutrition



- **Community-based education and counseling programs** to promote maternal nutrition, exclusive breastfeeding under six months, and the introduction of appropriate locally available complementary foods for children 6 to 23 months
- **Innovative food supplements for young children** and in partnership with the private sector, including ready-to-use lipid-based food supplements
- Increasing access to and **consumption of diverse and high-quality foods** by linking with agriculture and economic growth programs
- **Micronutrient interventions** for the most vulnerable, including vitamin A for children under five, iron for women and children, and iodized salt
- **Fortification programs** as part of value-chain development with the private sector, including biofortification
- **Community Management of Acute Malnutrition (CMAM)** that is integrated into national health services and community outreach

	<b>Supplements</b>	<b>Lipid-based Nutrient Supplement (LNS)</b>	<b>Sprinkles</b>	<b>Ready-to-use-Therapeutic foods</b>
<b>Application</b>	<ul style="list-style-type: none"> <li>•Prevention</li> <li>•Supports growth &amp; correct development in infants</li> <li>•Fortify supplementary foods given in addition to breast milk</li> </ul>	<ul style="list-style-type: none"> <li>•Prevention</li> <li>•Treatment of moderate malnutrition</li> <li>•Prevent and treat nutritional deficiencies</li> <li>•Humanitarian emergencies</li> </ul>	<ul style="list-style-type: none"> <li>•Prevention and treatment of MN deficiencies</li> <li>•In-home food fortification</li> </ul>	<ul style="list-style-type: none"> <li>•Treatment of moderate &amp; severe malnutrition</li> </ul>
<b>Target beneficiaries</b>	<ul style="list-style-type: none"> <li>•Children 6-24 months</li> </ul>	<ul style="list-style-type: none"> <li>•All people over 12 months</li> </ul>	<ul style="list-style-type: none"> <li>•Children 6-24 months</li> <li>•New formulations developed for adolescents, women of reproductive age, pregnant/lactating women</li> </ul>	<ul style="list-style-type: none"> <li>•All people over 6 months</li> </ul>
<b>Usage</b>	<ul style="list-style-type: none"> <li>•20g/day per child for 4-6 months</li> <li>•Consumed as is or mixed with food</li> </ul>	<ul style="list-style-type: none"> <li>•1.5 g/day per person for 14 days</li> <li>•Condiment added to family meal</li> </ul>	<ul style="list-style-type: none"> <li>•60 single-dose sachets for each child, consumed over 60 to 120 days.</li> <li>•Mixed with prepared food</li> </ul>	<ul style="list-style-type: none"> <li>•MAM: 1-2 sachets/day/person</li> <li>•SAM: 2-3 sachets/day/person</li> </ul>

- **Programs:** Economic risk management, productive safety nets, improve ability of countries to anticipate food security shocks and reduce vulnerability to them (including early warning systems), microcredit and savings, improve global coordination of emergency response
- **Impact:** Reductions in poverty, inequality, vulnerable household hunger

- **Programs:** Address constraints to cross-border trade; harmonize policies and regional standards; help develop/improve regional information management tools and analytical capacity; speed the development and uptake of new technology through regional science and technology networks; build planning and implementation capacity of public and private institutions
- **Impact:** increased regional food trade; reduced regional price volatility; reduced risk from drought, disaster, and animal and plant disease
- Strategic regional partners in Latin America, Africa, and Asia to leverage technical expertise, support increased regional coordination, improve trade relations



# Global Research and Technology Deployment

- **Strategy:** Basic, adaptive, social and policy research at the global, regional, and national levels; human and institutional capacity spanning research and extension; farm to market to table
- **2010 Focus:** Identify high-value research investments in existing pipeline for rapid scale up and deployment
- **Impact:** Emphasis on evaluating impact of technology adoption on incomes and health indicators to measure delivery and uptake of new technology

- Develop monitoring and evaluation framework with high-level objectives and goals
- Design country-specific results frameworks
- Develop reliable data sources to track progress
- Establish baselines and support reporting structures
- Conduct impact evaluations of current projects and integrate impact evaluations into new projects

- Market development
- Sustainability
- Build capacity of small and medium enterprises
- Technical expertise

## **Global/Regional Partnerships**

- Cell-phone based market information systems; trade in chilled beef; food packaging and labeling; onion and tomato storage and processing
- West Africa Seed Alliance (Ghana, Mali, Niger, Nigeria)
- Global Alliance for Improved Nutrition



**USAID**  
FROM THE AMERICAN PEOPLE



Thanks