

World Food Program Monitoring and Evaluation

Background

- WFP operates in 80 countries, delivering food to 113 million people
- Majority of deliveries for Emergency Operations

Case Study

Southern Africa

2002 Humanitarian Crisis

- 6 countries
- 14 million people
- Triple threat (Climate, HIV and Governance)
- New regional office established
- Need for a robust monitoring system

Objectives

- Quantitative
- Outputs and Outcomes (RBM)
- Comparable within and across countries
- Satisfy donor and corporate reporting requirements

CHS

Community and Household Surveillance

Objectives

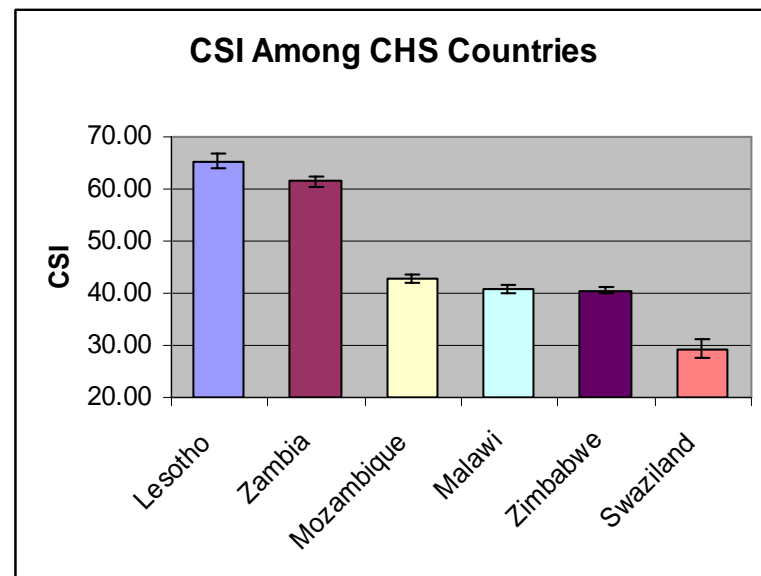
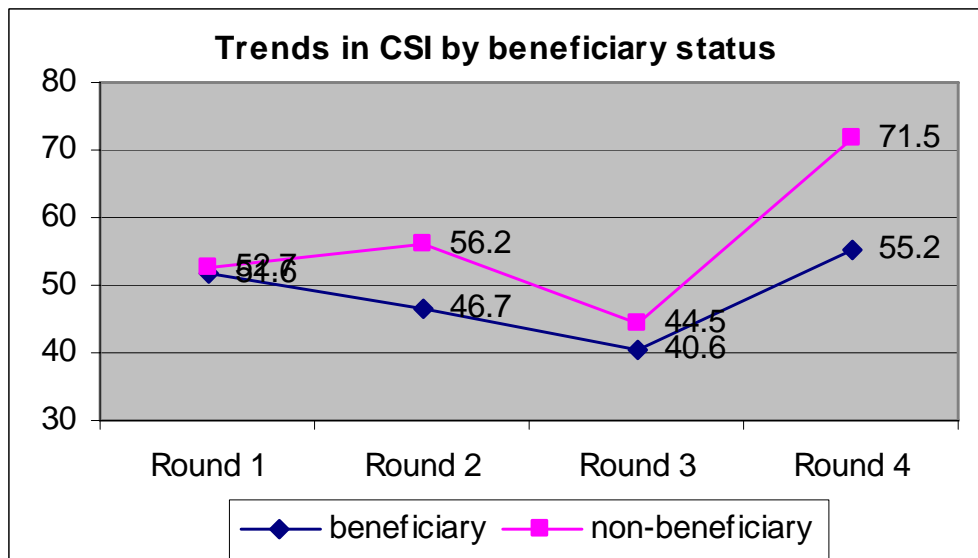
- Examines the outcomes of food aid interventions by comparing beneficiaries of food aid with non-beneficiaries on key vulnerability indicators
- Provides an understanding of access to food at household level

Community and Household Surveillance

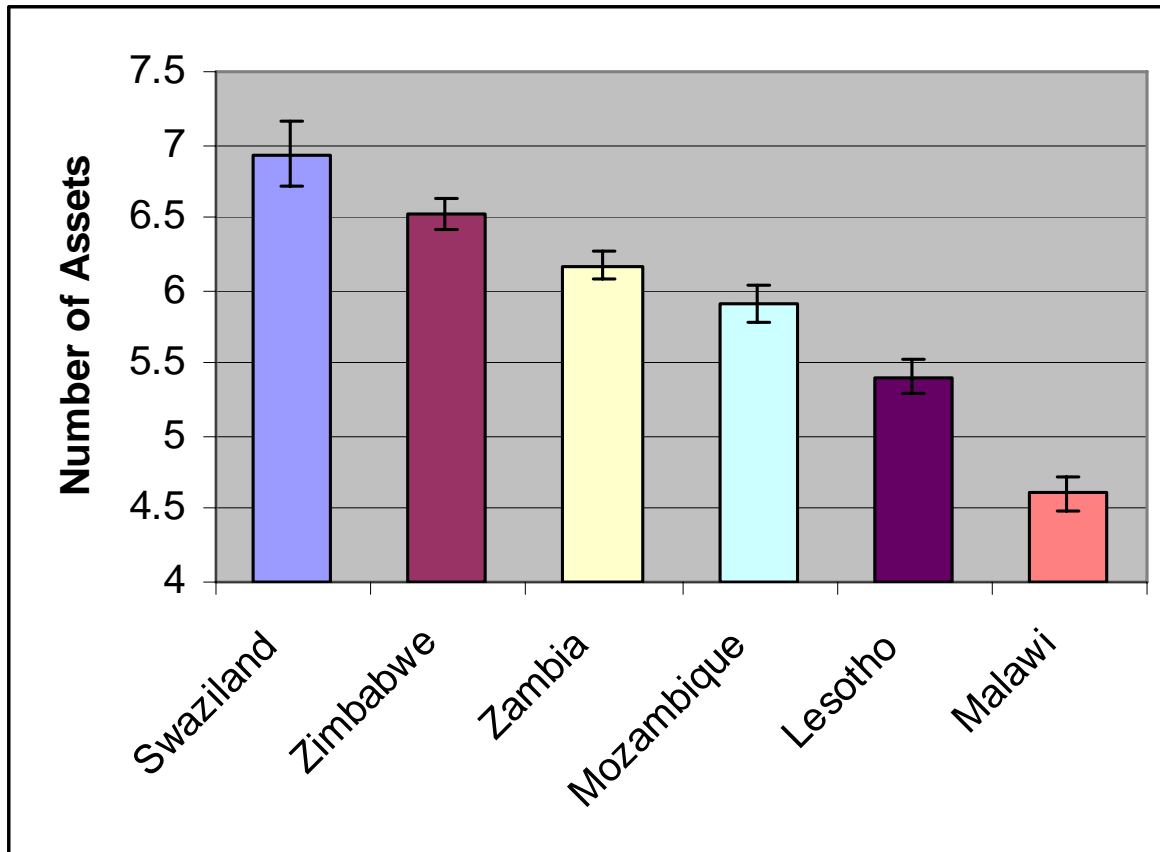
Indicators

- Food Aid Outcomes
 - Food Consumption
 - Coping Strategies
- Demographic Characteristics
 - Including changes in household composition
- Household Livelihood Strategies
- Food stock and sources at household level

Coping Strategy Index



Number of Assets owned



School attendance for beneficiary and non-beneficiary children between the ages of 5 and 18.

Household Type							
		Round 1		Round 2		Round 3	
		N	Percent	N	Percent	N	Percent
Non Beneficiary HH	Enrolled	2932	75.6	2879	78.1	5172	77.1
	Enrolled, absent > 1 week	170	4.4	50	1.4	184	2.7
	Dropped out in past 3 months	740	19.1	178	4.8	403	6.0
	Never enrolled	24	.6	534	14.5	857	12.8
	Secondary completed			45	1.2	96	1.4
	Other	14	.4	1	.0		
	Total	3880		3687		6712	
Beneficiary HH	Enrolled	3308	73.5	4321	78.5	3559	77.4
	Enrolled, absent > 1 week	244	5.4	103	1.9	119	2.6
	Dropped out in past 3 months	890	19.8	286	5.2	340	7.4
	Never enrolled	41	.9	684	12.4	537	11.7
	Secondary completed			106	1.9	44	1.0
	Other	15	.3	2	.0		
	Total	4498		5502		4599	

PDA's

Personal Digital Analysers

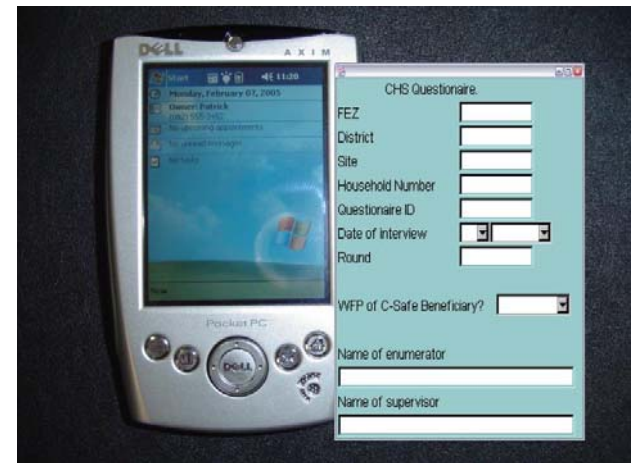
- First used by ZimVAC
- Introduced into WFP
M and E in 2005 (R4)
- Now covering all
EMOP countries



Country	Sample Size			N
	Round 1	Round 2	Round 3	
Lesotho	450	449	446	1,345
Malawi	640	793	785	2,218
Mozambique	592	885	892	2,369
Swaziland	150	143	239	532
Zambia	897	893	1,300	3,090
Zimbabwe	854	854	1,081	2,789
Total:	3,583	4,017	4,743	12,343

Challenges

- Huge effort to set up
- Extra time for loading questionnaire
- Training
- Poor eye sight



Activity	No. of days
Prepare a paper questionnaire	As Required
Load the questionnaire onto the PDA	10 days
Training	5 days per group
Uploading of files from PDA's into the database	5 days
Generating SPSS/excel files from data	5 days

Issues that aren't really issues

- Batteries
- Enumerators lacking computer experience
- Scroll down rather than across
- Do not under estimate time and care when loading questionnaire

Significant achievements to date

- Data base contains time series data on approx 15,000 from 6 countries
- Versatile analysis
- Growing demand for CHS data by;
 - COs for programme planning and review of progress, SPR and RBM reporting
 - Donor reporting

Advantages

- Small / Compact
- Data Immediately available for analysis
- No need for data entry
- Less time spent on data cleaning
- No questions skipped
- No illegible handwriting



Developments

- Data now uploaded on web
- Looking at including Anthropometric info
- Increase sample size
- Increase focus on outcomes