



Funding Issues in Integrating Nutrition into President's Emergency Plan for AIDS Relief (PEPFAR)

Karen Ivantic-Doucette, MSN, RN-CS, ARCN, FNP

Clinical Assistant Professor, Marquette University School of Nursing

Member, President's Advisory Council on HIV and AIDS (PACHA)



PEPFAR Vision, Mission, Goals

- ✍ Turn the tide of the global pandemic
- ✍ Work with world leaders to promote integration of prevention, care and treatment with urgent eye to most afflicted nations
- ✍ Encourage leadership, apply best practices, coordinate efforts



PEPFAR: Content

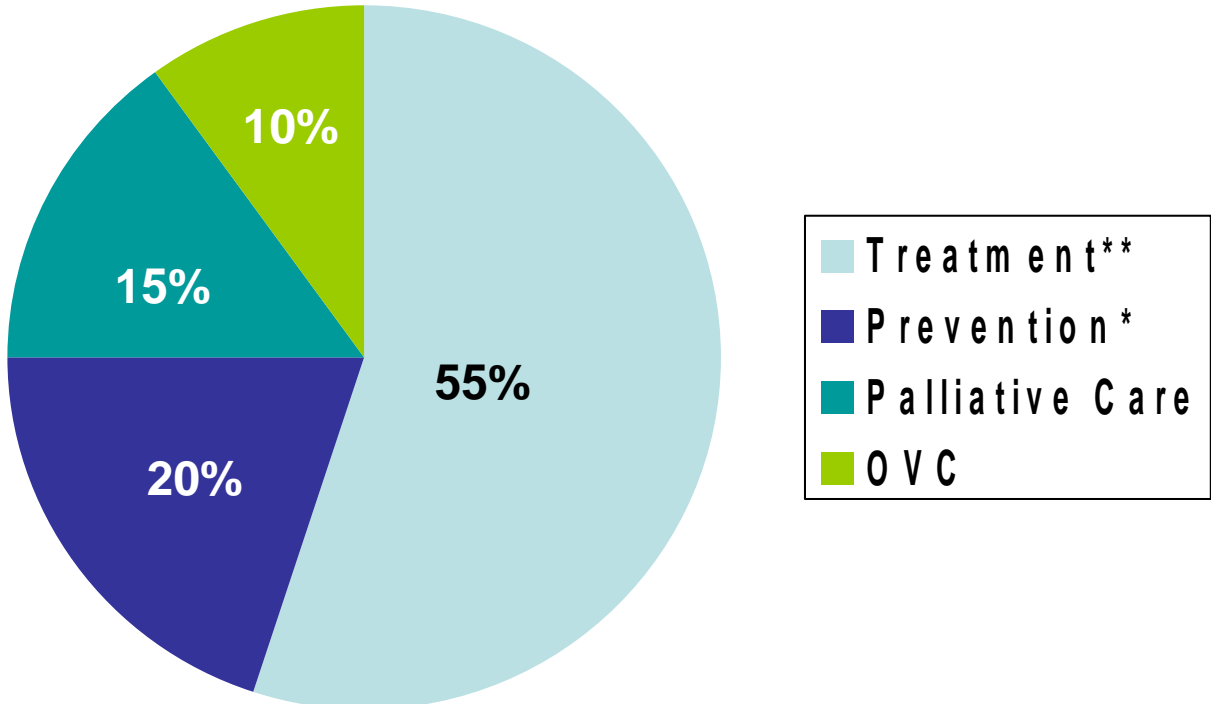
✍ PL 108-25: an Act of Congress to provide assistance to foreign countries to combat HIV/AIDS, Tuberculosis, and Malaria, and for other purposes.
May 27, 2003.

✍ Authorizes President's Initiative

- Budget = \$15 billion (\$10 billion new money)
- Comprehensive 5 year global strategy
- Authorizes Global AIDS Coordinator
- Covers 15 countries



Distribution of Funds



*33% of prevention funds should be for abstinence until marriage programs

**75% of treatment funds should be for purchase and distribution of ARVs




2/7/10

- ✍ Provision of ART to 2 million
- ✍ Prevention of 7 million new infections
- ✍ Provision of non-ART care and support to 10 million who are HIV infected or AIDS orphans or vulnerable children
- ✍ Measures:
 - Numbers of individuals served
 - Numbers of persons trained to deliver care
 - Number of service delivery programs supported



Mother-to-Child Initiative



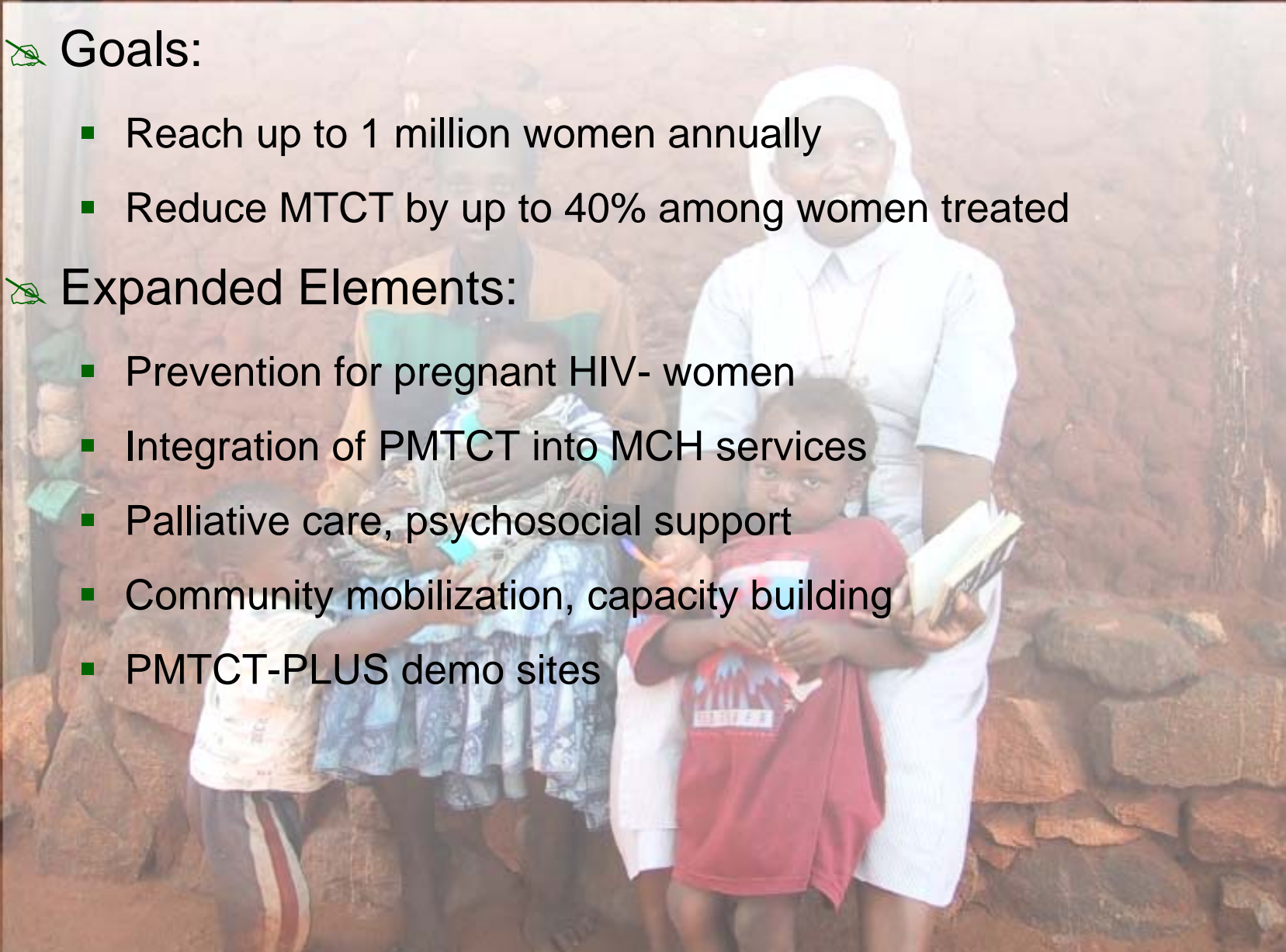
Goals:

- Reach up to 1 million women annually
- Reduce MTCT by up to 40% among women treated









Expanded Elements:

- Prevention for pregnant HIV- women
- Integration of PMTCT into MCH services
- Palliative care, psychosocial support
- Community mobilization, capacity building
- PMTCT-PLUS demo sites





Strategic Principles

- 
- 
- 
- 
- 
- 
- ✍ Worldwide battle, urgency in action
 - ✍ Seek new approaches, new leadership model
 - ✍ Use evidence base for policy, demand accountability
 - ✍ Tailor programs to local needs according to host government policies and strategies
 - ✍ Develop new and strengthen existing networks and services
 - ✍ Combat stigma, encourage testing, seek involvement of people impacted by HIV infection
 - ✍ Employ prevention lessons with emphasis on “AB” of the “ABC”
 - ✍ Encourage and strengthen national leadership, NGOs, partnerships while maintaining focus



Where Food and Nutrition Fit



Under “Care Objective”

- Scaling up basic health care and support under the heading of “palliative care”
 - Basic necessities such as nutrition for routine clinical monitoring and management of HIV/AIDS complications
 - Nutrition as a part of end-of life care
- Improving long-term solutions
 - Training in universities and of current health care professionals
 - Twinning with centers of excellence new partnerships
 - Essential supplies and integration of hospice activities





Where Food and Nutrition Fit

USAID's HIV/AIDS Research Strategy

- Impact and effectiveness of providing nutrition supplements on adherence to ARVs and return for HIV care
- Cost and feasibility of incorporating nutrition supplements into ARV programs
- Nutrient and caloric formulation of nutrition supplements in adults and children
- Improvement of general health services to persons with HIV and TB, generating evidence

Public-Private Partnerships

- Example: PVO/NGO and private organizations
 - HIV in the workplace
 - Development and capacity building in targeted countries



Kenyan Example

✂ Training a Sustainable Health Care Workforce (USAID/GH Cooperative Agreement)

- Nutrition modules train nurses on general principles of nutrition in health and disease, assessment, and intervention
- Dietetics and Small Gardens Systems (DSGS) integrates nutrition with prevention, care/treatment programs



- » Food by Rx
- » Water by Rx
- » Vitamins/minerals by Rx
- » Gardens by Rx
- » Nutrition outreach efforts integrated into health care networks including education, training, and monitoring activities for impact of nutrition on health, survival, and ARV support



Summary

- ✍ Tailored nutrition and food are important for health/ARV programs and sustainable development efforts in populations affected by HIV, TB, and malaria
- ✍ Care and treatment efforts include food and nutrition
- ✍ Efforts to integrate nutrition programs must generate evidence to support continued use
- ✍ Efforts must show continued value for funding through PEPFAR

