

Breakdown by donor in 2004

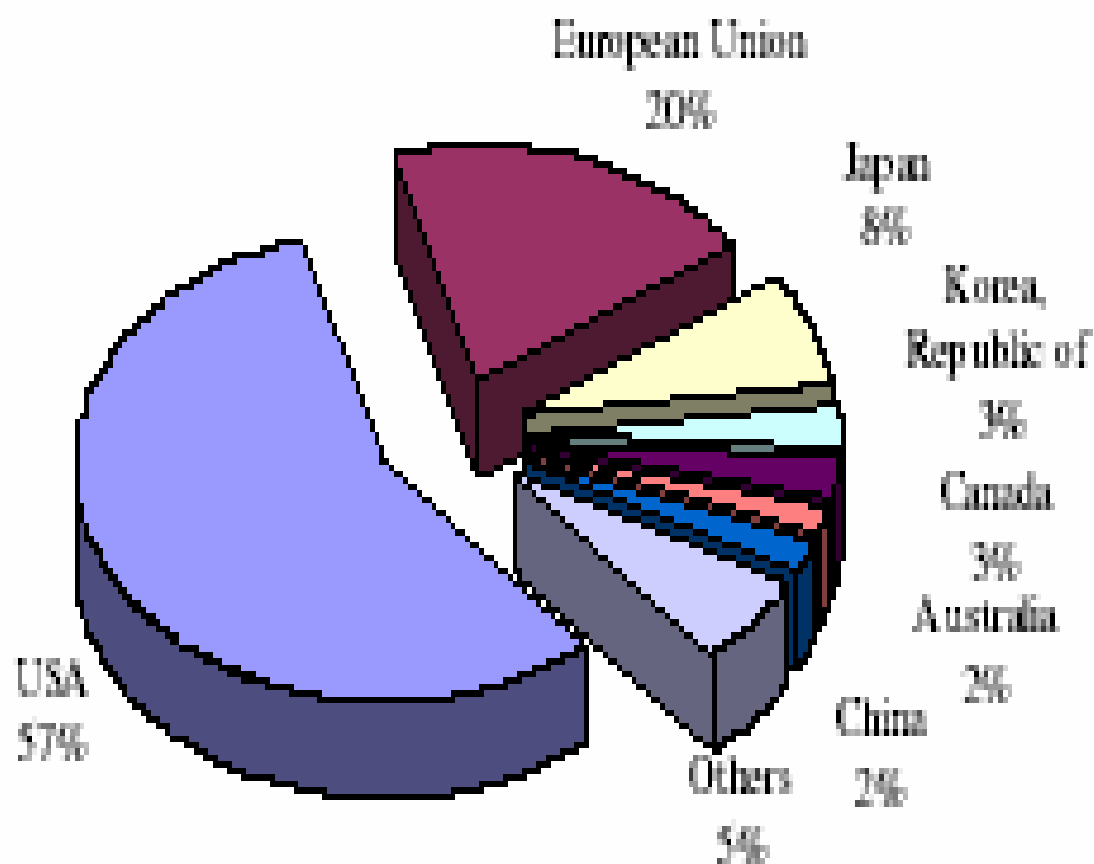
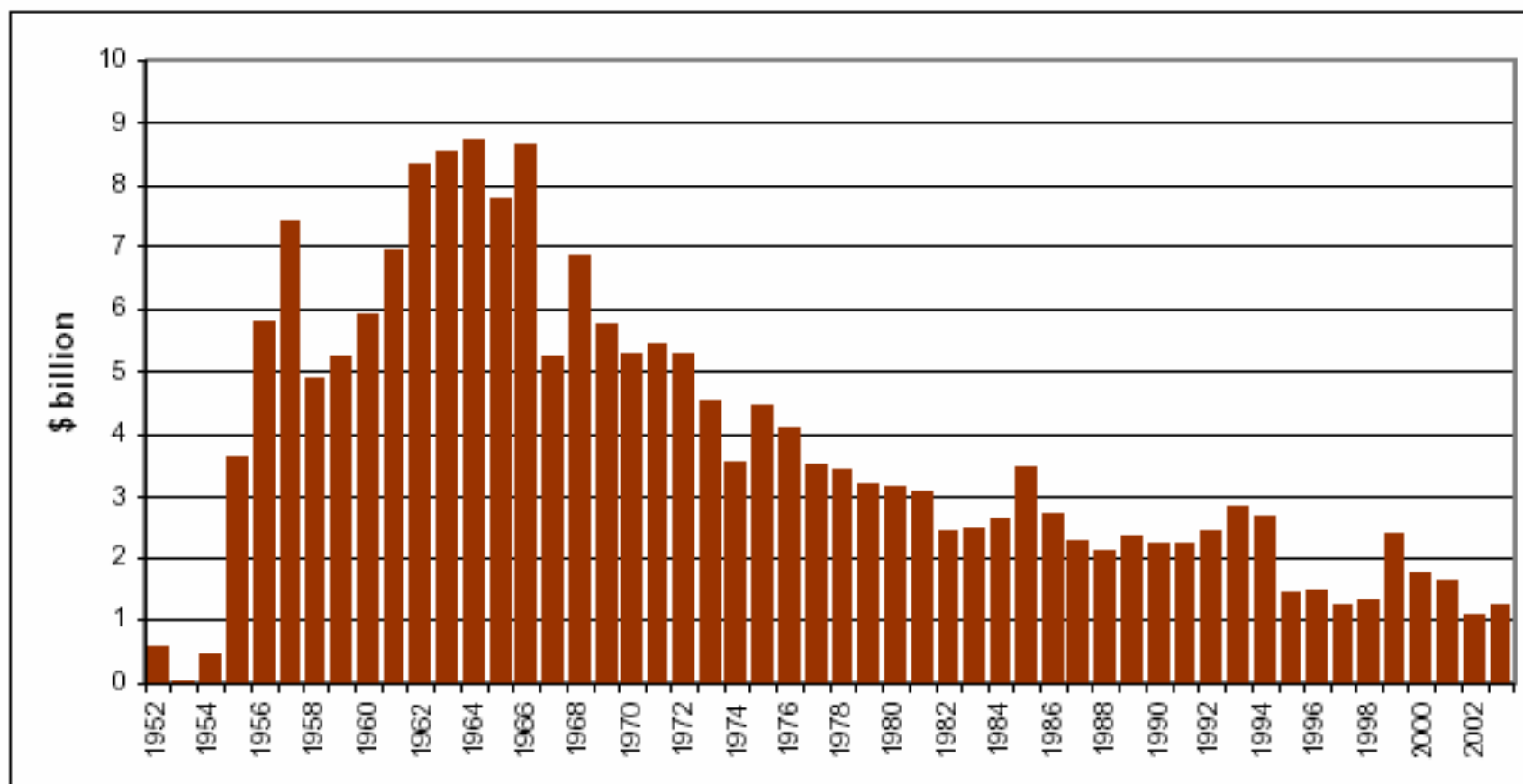


Figure 1.2: Trend in U.S. food aid levels, 1952-2003

(U.S. \$ billion, constant 2002 dollars)



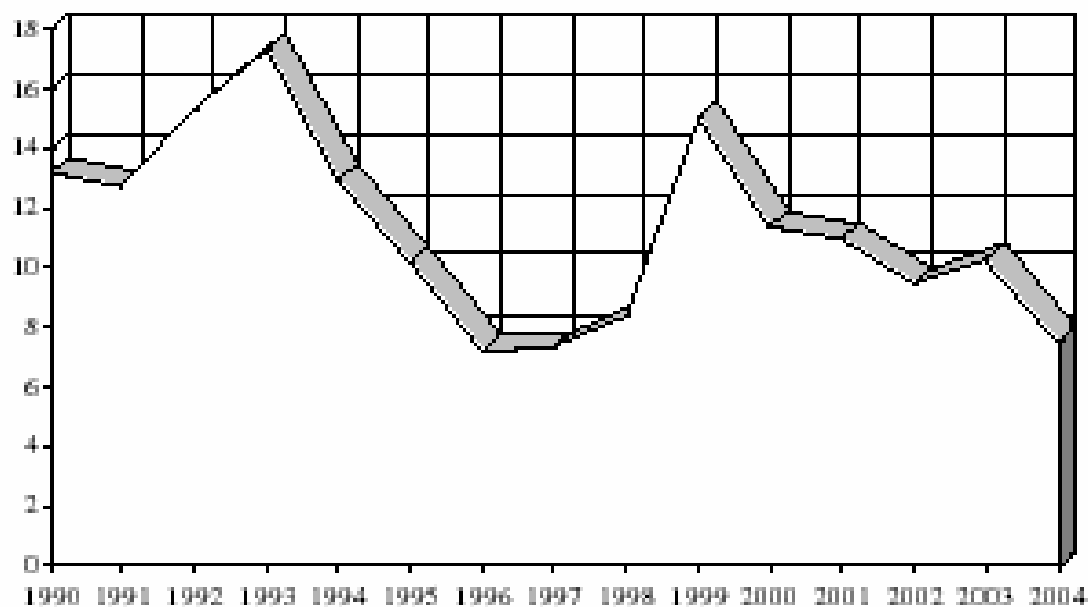
Source: USAID. Overseas Loans and Grants and Assistance from International Organisations: Obligations and Loan Authorities, July 1, 1945 – September 30, 2001. Data for 2002 and 2003 are from USDA/FAS.

1. GLOBAL FOOD AID DELIVERIES

Graph 1: Global Food Aid Deliveries in 1990-2004

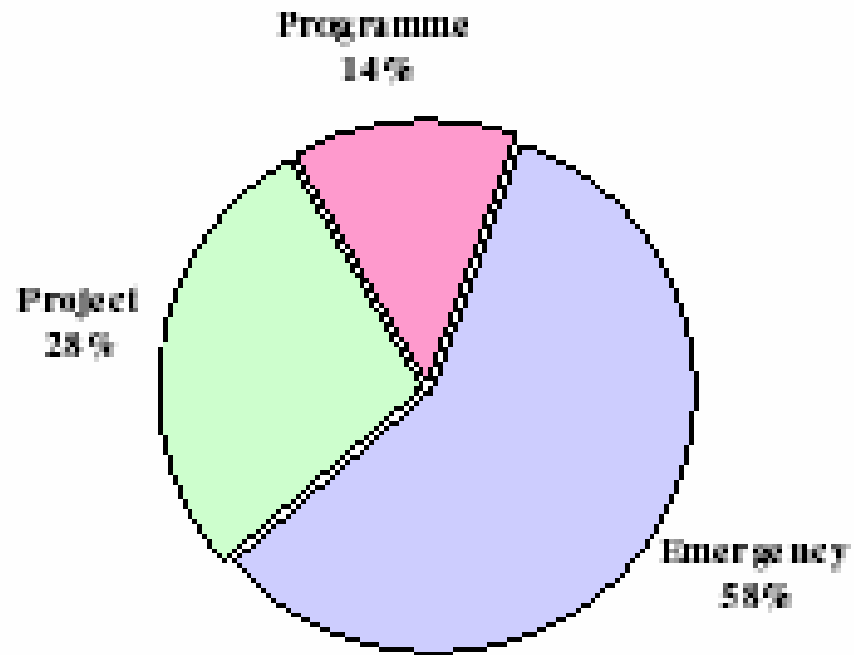
(In million tons)

1990	1991	1992	1993	1994	1995	1996	1997	1998	1999	2000	2001	2002	2003	2004
13.2	12.7	15.3	17.3	12.9	10.2	7.2	7.3	8.4	15.0	11.4	11.0	9.5	10.3	7.5



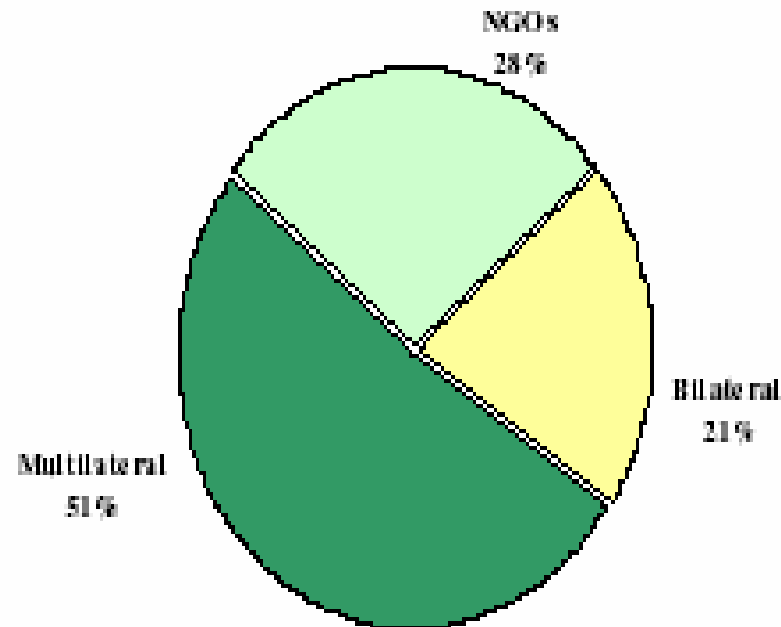
Source: WFP/INTERFAIS, Base 2005

Graph 15: Breakdown of 2004 Food Aid Deliveries by Category



5. FOOD AID CHANNELS

Graph 19: Breakdown of 2004 Food Aid Deliveries by Channel

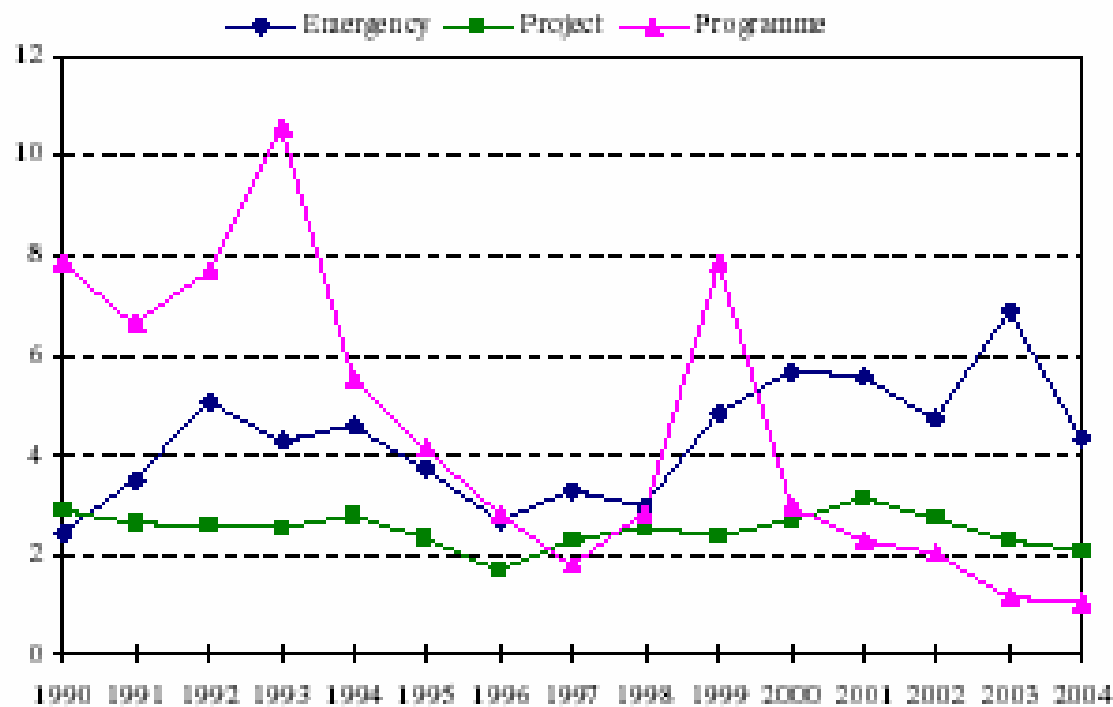


Source: WFP/INTERFAIS, June 2005

FOOD AID CATEGORIES

Graph 14: Food Aid Deliveries by Category in 1990-2004

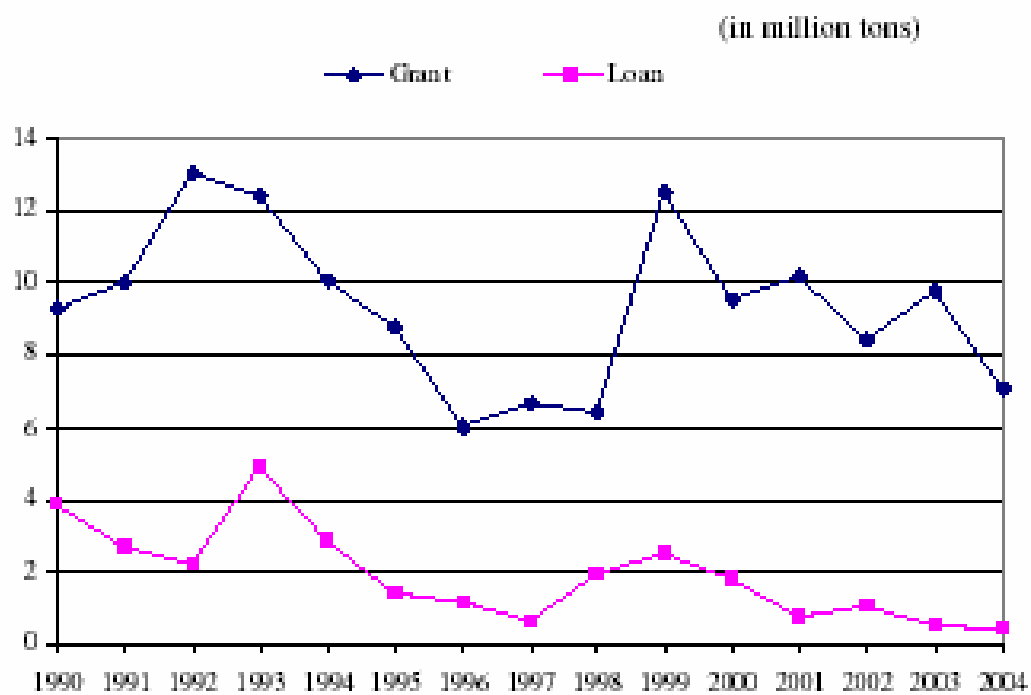
(in million tons)



Source: WFP/INTERFAH, June 2005

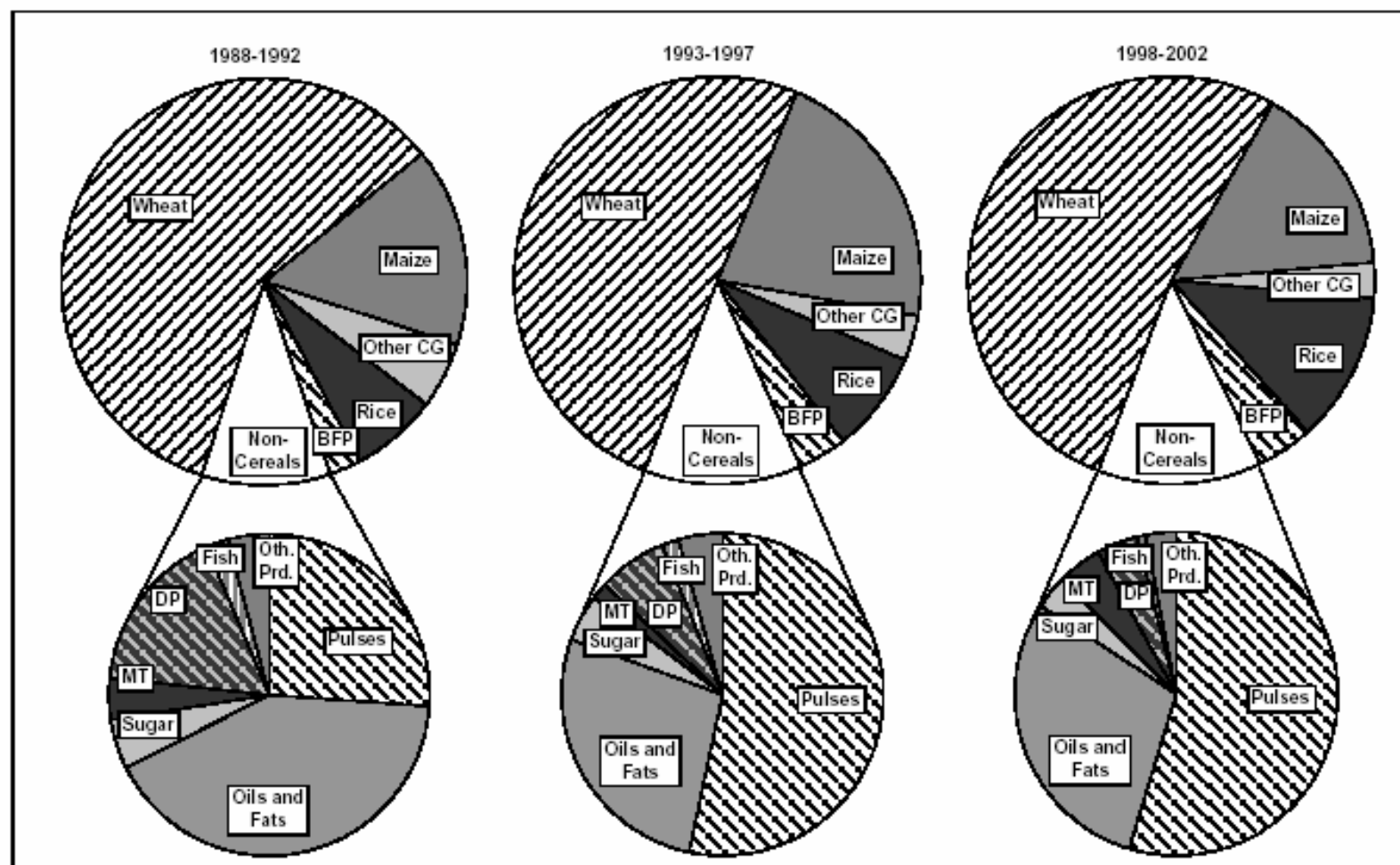
Terms of Delivery

Graph 24: Food Aid Deliveries by Terms of Delivery in 1990-2004



Source: WFP/INTERFAIS, June 2005

Figure 2: Commodity composition of food aid donations, 1988-2002

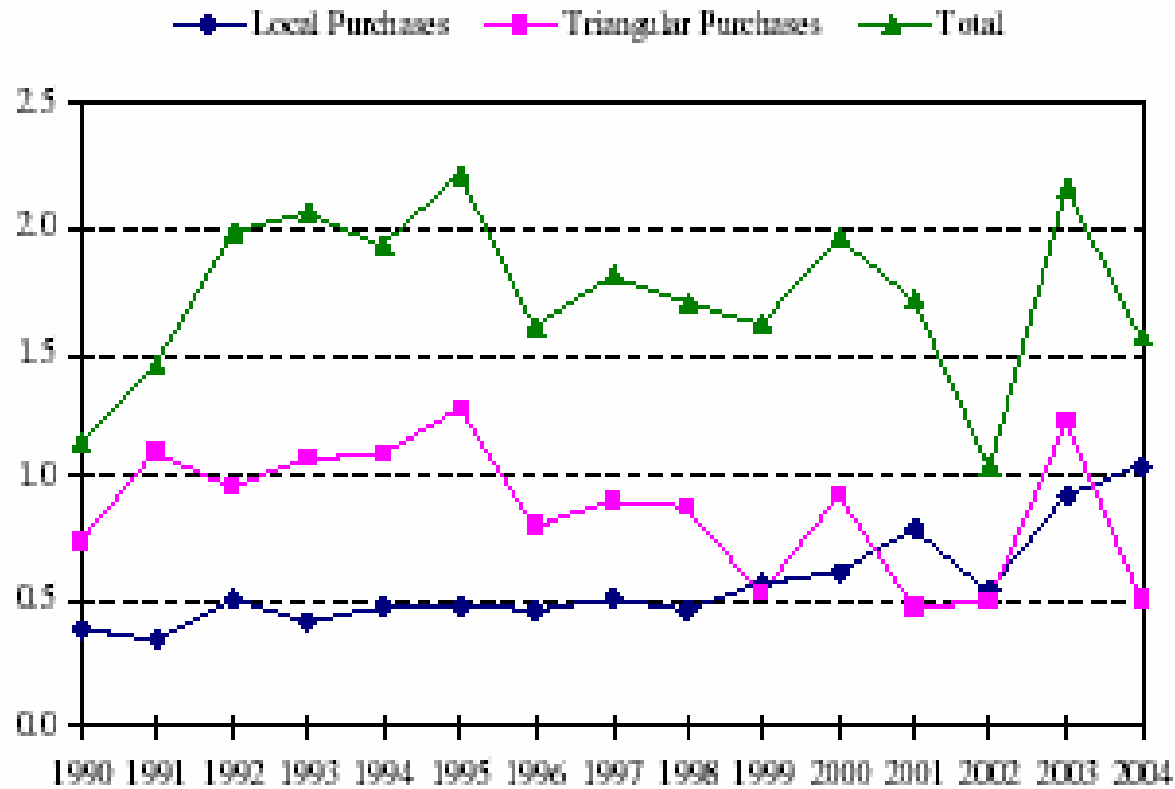


Notes: Other CG = Other Coarse Grains
 BFP. = Blended and Fortified Products
 MT = Meat
 DP = Dairy Products
 Oth.Prd. = Other Products

Source: OECD Secretariat, calculation based on data from INTERFAIS

Graph 25: Food Aid Procurement in Developing Countries in 1990-2004

(in million tons)

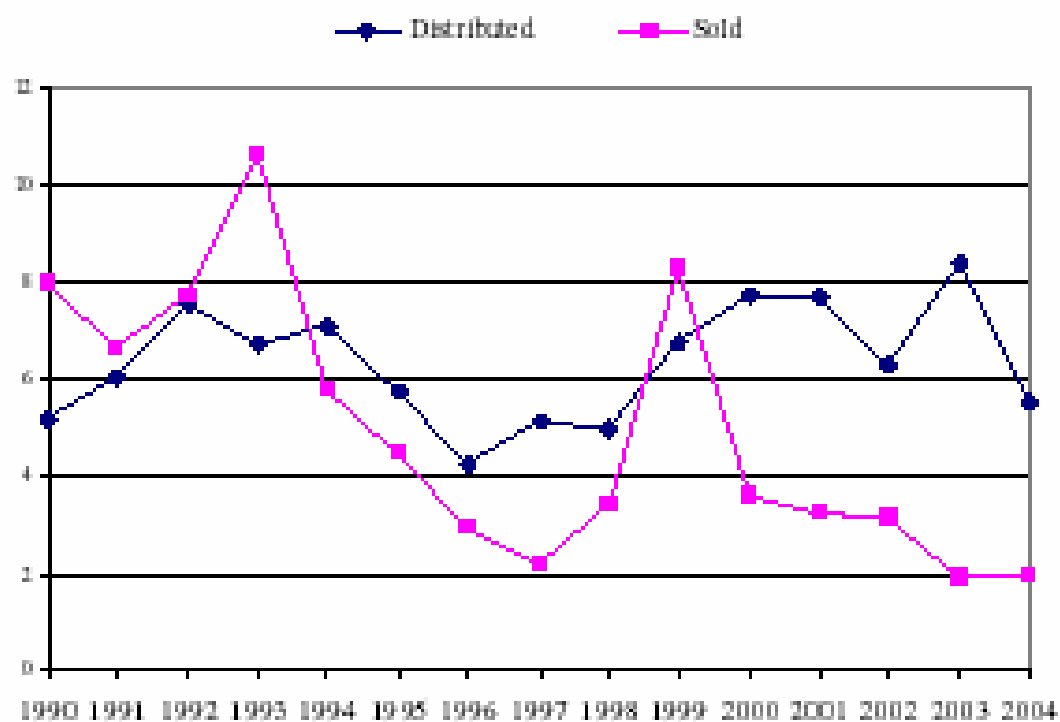


Source: WFP/INTERFAIS, June 2005

8.1 Sale of Food Aid

Graph 23: Food Aid Deliveries by Market Sales in 1990-2004

(in million tons)



Source: WFP/INTERFAIS, June 2005

